



For over 35 years we have been keeping your business on track



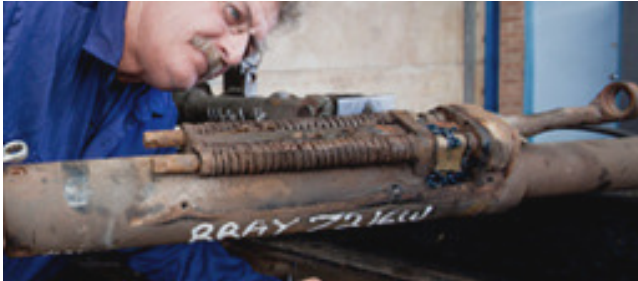
WELCOME TO FRONTLINE RAIL

We are a railway engineering company based in the Midland area of Perth, Western Australia, we are proudly WA Owned and Operated. We have been providing engineering services to the Rail industry since 1980. Frontline Rail is innovative and regarded as a genuine service and parts supplier that offers a wide range of products and services to our valued customers. We are an ISO9001 accredited company.



WE VALUE

- CLIENTS FIRST
- INNOVATION
- FLEXIBLE
- HIGHEST STANDARDS
- SAFETY
- ENVIRONMENT
- PARTNERSHIPS



OUR CLIENTS INCLUDE:

- SPENO RAIL MAINTENANCE
- PACIFIC NATIONAL
- KEYSOURCE RAIL
- RHOMBERG RAIL
- PROGRESS RAIL
- BRADKEN
- AURIZON
- GEMCO
- WATCO
- BHPIO
- CFCLA
- UGL



Big enough to do the work. Flexible enough to guarantee quick response to your needs.

A proven capability to provide clients with fast turnarounds & limited downtime.

ROLLING STOCK

Complete overhaul, Modifications, Servicing, Build and supply, Bogie overhaul, Reconditioning of Draft gear, Yokes, couplers, Hand brakes, Brake gear, Slack adjusters, Repair of De-railed units. Carry out servicing, maintenance, repairs & supply spare parts to Rail Passenger cars, Rail wagons, Locomotives, Bogies, associated Rail construction/maintenance machines and equipment.

RAIL PASSENGER CARS

Car Air bag suspension overhaul and Bogie overhaul.

FABRICATION & ENGINEERING

Carry out design construct and build engineering/fabrication as a walk in open door approach for the railroad Industry.

ENGINEERING SITE SERVICES

We provide on-site repairs, on-site engineering services and qualified personnel for project work and permanent way welding services

RAIL CONSTRUCTION / MAINTENANCE MACHINES & EQUIPMENT

Carry out servicing and repairs to Tampers, Regulators, Rail grinders, Specialised rail equipment

LOCOMOTIVES

Carry out servicing and repairs, Supply machined and fabricated unique spare parts, Bogie overhaul, Hand brake overhaul.

Our team are experienced, fully qualified/accredited trades people for railroad engineering fabrication and fitting work, both workshop and on site.

CONTACT US:

18 Irwin Street Bellevue WA 6056

Telephone (08) 9274 1960

ABN: 65 446 489 645

www.frontlinrail.com.au